



P.O. Box 6  
Centralia, Missouri 65240  
573/682-5514 PHONE  
573/682-5044 FAX  
[www.showmeshortline.com](http://www.showmeshortline.com)



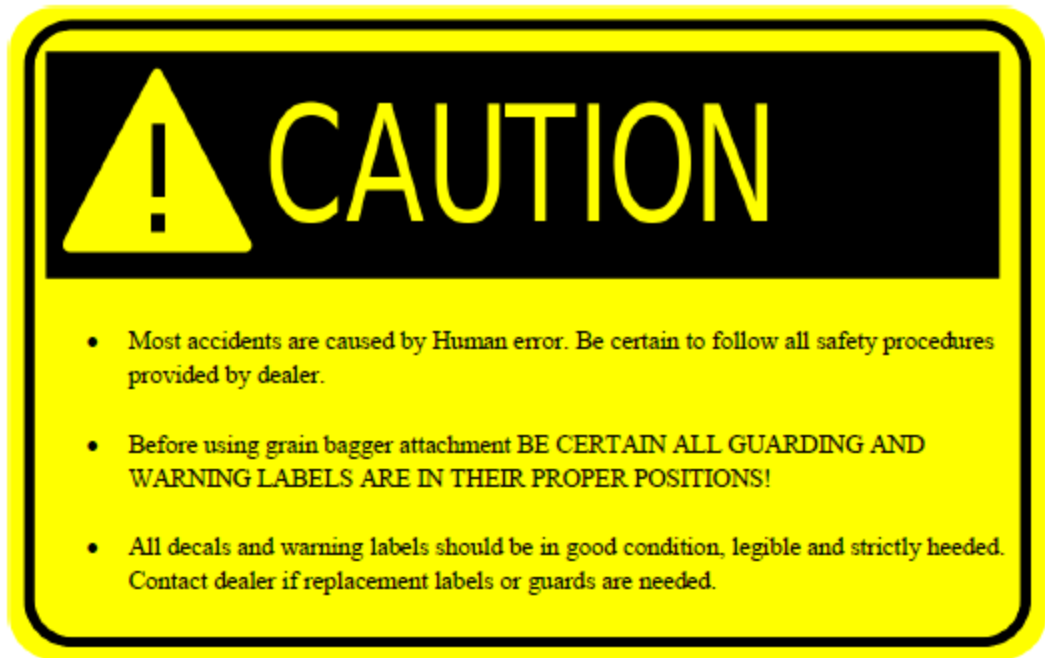
***RTU1250 Under Hopper Auger  
(R950 & R1050)  
Parts & Assembly Manual***



P.O. Box 6  
Centralia, Missouri 65240  
573/682-5514 PHONE  
573/682-5044 FAX  
[www.showmeshortline.com](http://www.showmeshortline.com)

Revised November 2014

Product specifications may change without notice.



P.O. Box 6  
Centralia, Missouri 65240  
573/682-5514 PHONE  
573/682-5044 FAX  
[www.showmeshortline.com](http://www.showmeshortline.com)

Revised November 2014

Product specifications may change without notice.

**! WARNING**

Before Transport

- Verify that the tow bar pin is properly secured
- Verify that the grain bagger swivel pins are secured
- Verify that the transport bracket is in place and secured
- Verify that the winch and winch arm cable are secured
- Verify that the lifting cable and hook are secured prior to lifting hopper pan
- Verify that the hopper pan is resting securely in the transport bracket
- Verify that transport chain and hook are securely fastened to hopper pan and grain bagger

**MAINTENANCE**

- Verify Grain Bagger Attachment bearings are well lubricated prior to each use
- Keep Grain Bagger Attachment clean and sheltered when not in use



P.O. Box 6  
Centralia, Missouri 65240  
573/682-5514 PHONE  
573/682-5044 FAX  
www.showmeshortline.com

Revised November 2014

Product specifications may change without notice.

# Richiger Assembly Instructions

## Step 1 Tongue Mount

1. Mount Tongue to Richiger unit using (5) 5/8"-11 x 2-3/4" existing pins, bolts and lock pins. See **Figure 1**. (This is pre-loaded and must be done first)



Figure 1 and 2

## Step 2 Hopper Face Plate

1. Cut 15-7/8" Diameter Hole in front Lower Section Hopper Face Plate
2. Center Sliding Mechanism on Front of Hopper Face Plate and mark 4 mounting locations to be drilled 7/16". Note: These holes should be center of the vertical slots located on the Sliding Mechanism.
3. Mount Sliding Mechanism to the back side of Hopper Face Plate using 5/16"-18 x 1-1/2" Hex Bolts, Washers & Nuts. Making sure to locate the grain scoop to the bottom side and bending to the front of the Hopper Face Plate. See **Figure 3**. Note: There must be a washer under both the bolt head and the nuts. These bolts get double-nutted. Do Not over tighten the inside nut or the mechanism will not slide.
4. For Hole Cut out dimensions and location on Hopper face, see **Appendix**



Figure 3



P.O. Box 6  
Centralia, Missouri 65240  
573/682-5514 PHONE  
573/682-5044 FAX  
www.showmeshortline.com

Revised November 2014

Product specifications may change without notice.



**Step 3 Auger Mount**

1. Mount Auger Boot to Bracket using  $\frac{1}{2}$ "-13 x 8" All thread Rods, Double Nutting each end. See **Figure 4**.



**Figure 4**

2. Mount Auger Boot bottom to Mounting Bracket on tongue using (2)  $\frac{1}{2}$ "-20 x 1- $\frac{1}{4}$ " Hex Bolts, Nuts, Washers and Locks. See **Figure 5**.



**Figure 5**

3. Tilt Richiger unit to the forward position until cylinder is completely Retracted. (See **Figures 6 & 7**)



**Figure 6**



**Figure 7**

4. Lift auger tube so the sliding hopper face plate mechanism is in the UP position. (See **Figure 9**)



P.O. Box 6  
Centralia, Missouri 65240  
573/682-5514 PHONE  
573/682-5044 FAX  
www.showmeshortline.com

Revised November 2014

Product specifications may change without notice.



Figure 6

5. Bolt Auger support channel onto tongue using 1/2"- 20 x 1-1/4" hex bolt, nut and lock.
6. Clamp Auger support strap to auger tube and slide to the flat side of upright channel.
7. Center auger tube in the left to right position in hopper face plate and drill 1/2" dia. hole through the Auger Clamp, using the upright channel as your guide. Bolt upright to the clamp using 1/2"- 20 x 1-1/4" hex bolt, nut and lock. (See Figure 10)



Figure 7

8. Assemble the Auger swing out arm and hopper bottom pan.



Figure 8



P.O. Box 6  
 Centralia, Missouri 65240  
 573/682-5514 PHONE  
 573/682-5044 FAX  
 www.showmeshortline.com

Revised November 2014

Product specifications may change without notice.



**Figure 9**

9. Connect lower swing out auger to upper auger and tighten bolts securely



**Figure 10**



P.O. Box 6  
Centralia, Missouri 65240  
573/682-5514 PHONE  
573/682-5044 FAX  
www.showmeshortline.com

Revised November 2014

Product specifications may change without notice.



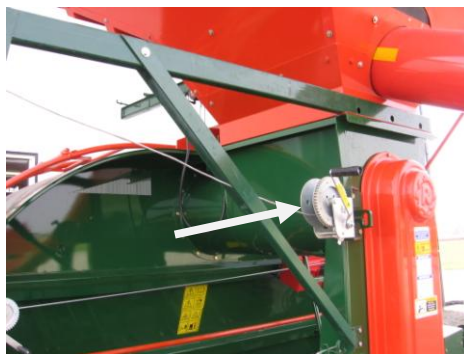
**Figure 11**

**Step 4**

1. Mount Winch Lift Arm to the bottom of the hopper, using the 4 bolts that were left out. (See Figure 11)
2. Remove the spring mount from the Richiger unit and place the Winch Arm Brace behind the spring mount and mount using the same hardware. (See Figure 12)



**Figure 12**



**Figure 13**



P.O. Box 6  
Centralia, Missouri 65240  
573/682-5514 PHONE  
573/682-5044 FAX  
www.showmeshortline.com

Revised November 2014

Product specifications may change without notice.



3. Locate the Winch Arm Brace to the Winch Arm by drilling a 3/8" hole through the Winch Arm using the existing Brace holes as a guide. (See Figure 13) Mount with a 3/8"- 11 x 2-1/2" bolt, nut & lock.



**Figure 14**

4. Mount Swivel Pulley to the end of Winch Arm using a grade 5 or higher 3/8"-11 x 2-1/2" bolt, nut & lock. Place Washers on both sides of pulley eye to align pulley to the center of the Winch Arm. (See Figure 14)



**Figure 15**

5. Mount Winch Bracket using the two bolts on the Richiger unit show in Figure 15.



**Figure 16**

6. Mount the Winch



P.O. Box 6  
Centralia, Missouri 65240  
573/682-5514 PHONE  
573/682-5044 FAX  
www.showmeshortline.com

Revised November 2014

Product specifications may change without notice.

7. Attach to hopper pan as shown in Figure 16



Figure 16

8. Attach Transport Chain to Bagger as shown in Figure 17



Figure 17



P.O. Box 6  
Centralia, Missouri 65240  
573/682-5514 PHONE  
573/682-5044 FAX  
www.showmeshortline.com

Revised November 2014

Product specifications may change without notice.

9. Attach Transport Bracket and tighten bolts securely as shown in **Figure 18**



**Figure 18**

Step 5 Transport Condition

1. Transport position (Figure 21)
2. To lift hopper pan at attach winch hook to D-Ring on hopper pan and lift hopper pan with winch until edge of pan rests in Transport Bracket. (Figures 19 & 20)



**Figure 19**



P.O. Box 6  
Centralia, Missouri 65240  
573/682-5514 PHONE  
573/682-5044 FAX  
www.showmeshortline.com

Revised November 2014

Product specifications may change without notice.



Figure 20

3. Attach safety chain (See Figure 21) once hopper pan is resting safely in transport bracket and slightly relax tension on winch cable but **DO NOT UNHOOK WINCH CABLE DURING TRANSPORT.**



P.O. Box 6  
Centralia, Missouri 65240  
573/682-5514 PHONE  
573/682-5044 FAX  
www.showmeshortline.com

Revised November 2014

Product specifications may change without notice.





Figure 21



Figure 22

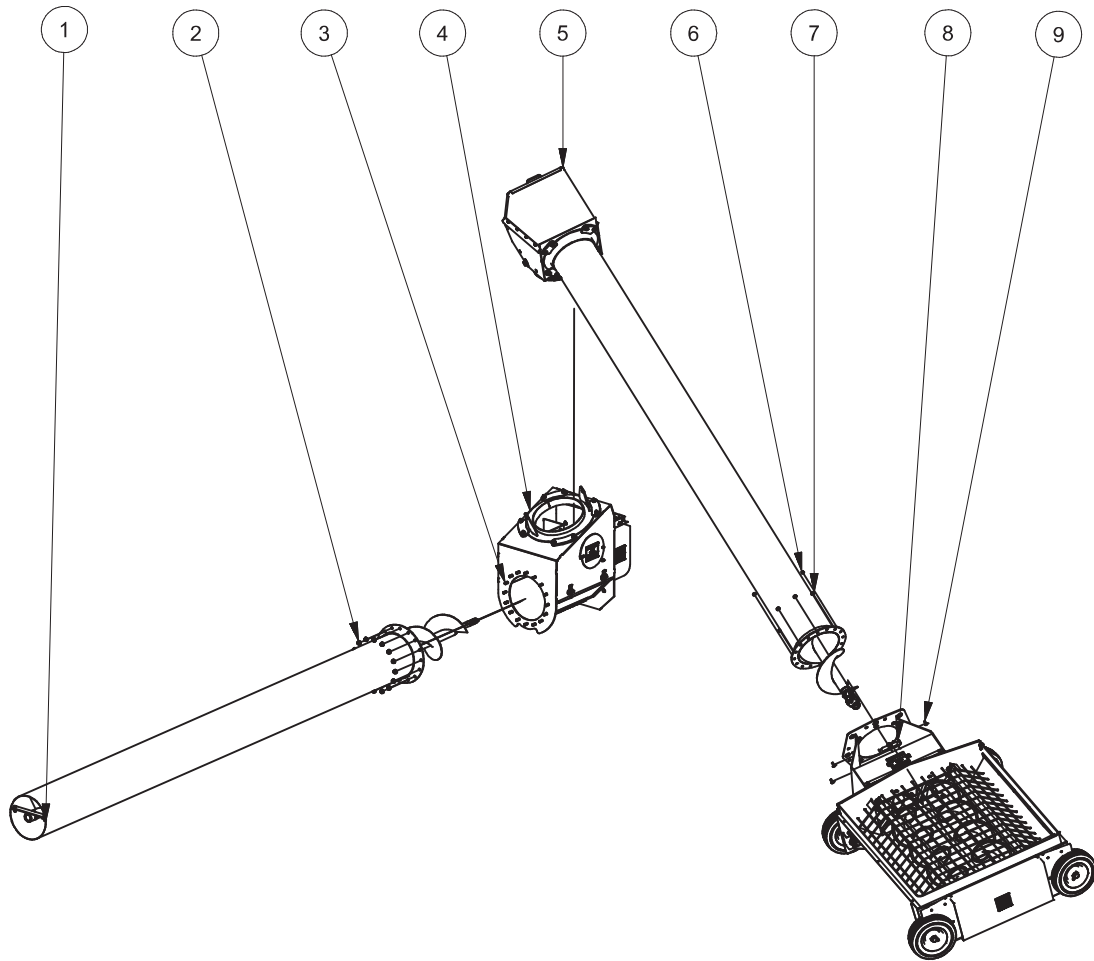


P.O. Box 6  
Centralia, Missouri 65240  
573/682-5514 PHONE  
573/682-5044 FAX  
www.showmeshortline.com

Revised November 2014

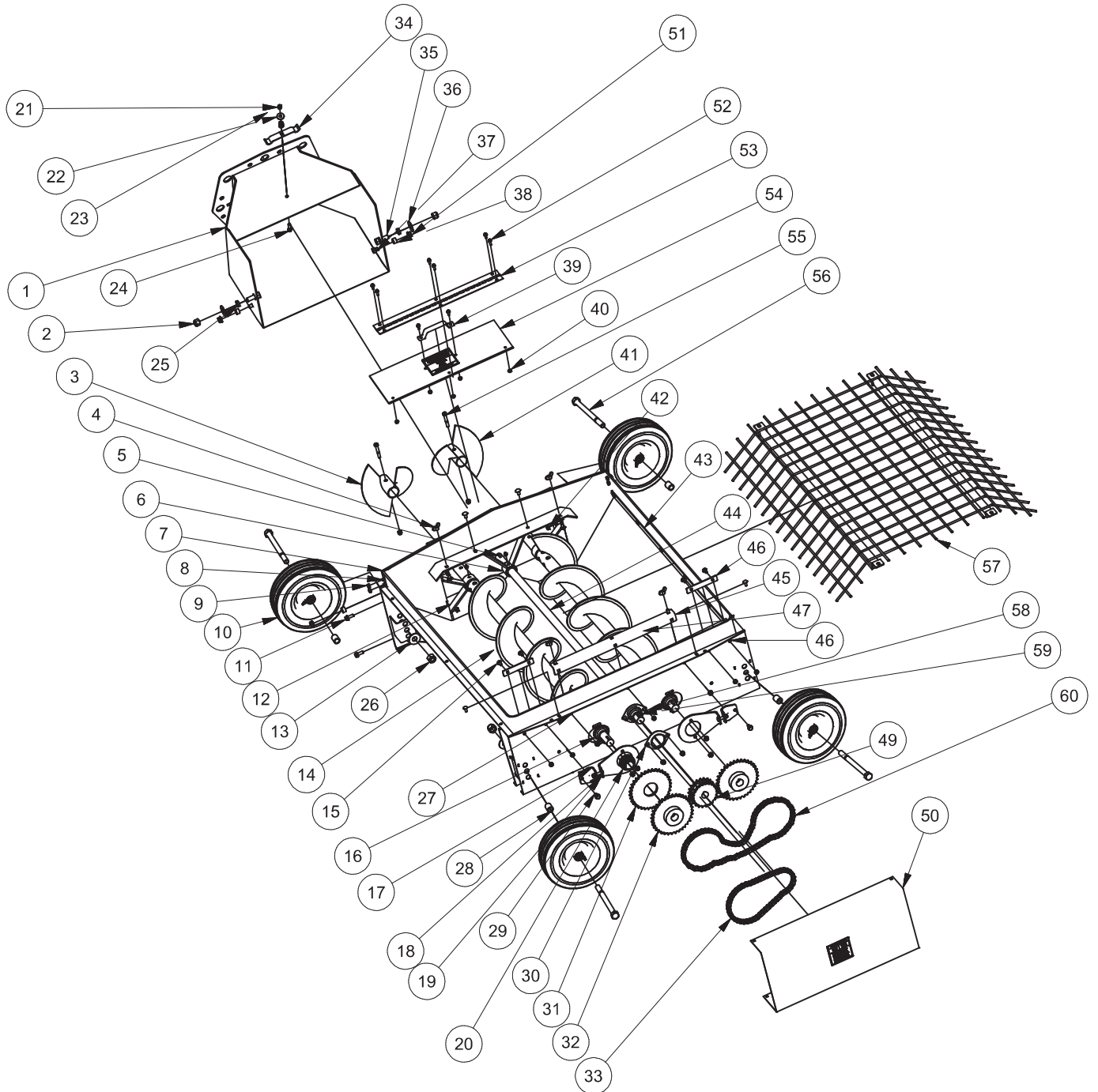
Product specifications may change without notice.

# FEED SYSTEM BAGGER RICHIGER



ITEM	PART NUMBER	QTY	DESCRIPTION
1	4092-03	1	Tube Main
2	13073100008	16	1/2-13 UNC Flange Nut
3	13071208020	16	1/2-13 UNC x 1.25 Flange Bolt
4	4092-04	1	Boot
5	4092-02	1	Feed Head/Tube
6	13073100006	3	3/8-16 UNC Flange Nut
7	13073100007	5	7/16-14 UNC Flange Nut
8	4092-01	1	Hopper
9	13-0709-06016	3	Carriage Bolt - 3/8" x 1" - 16

# HOPPER ASSEMBLY

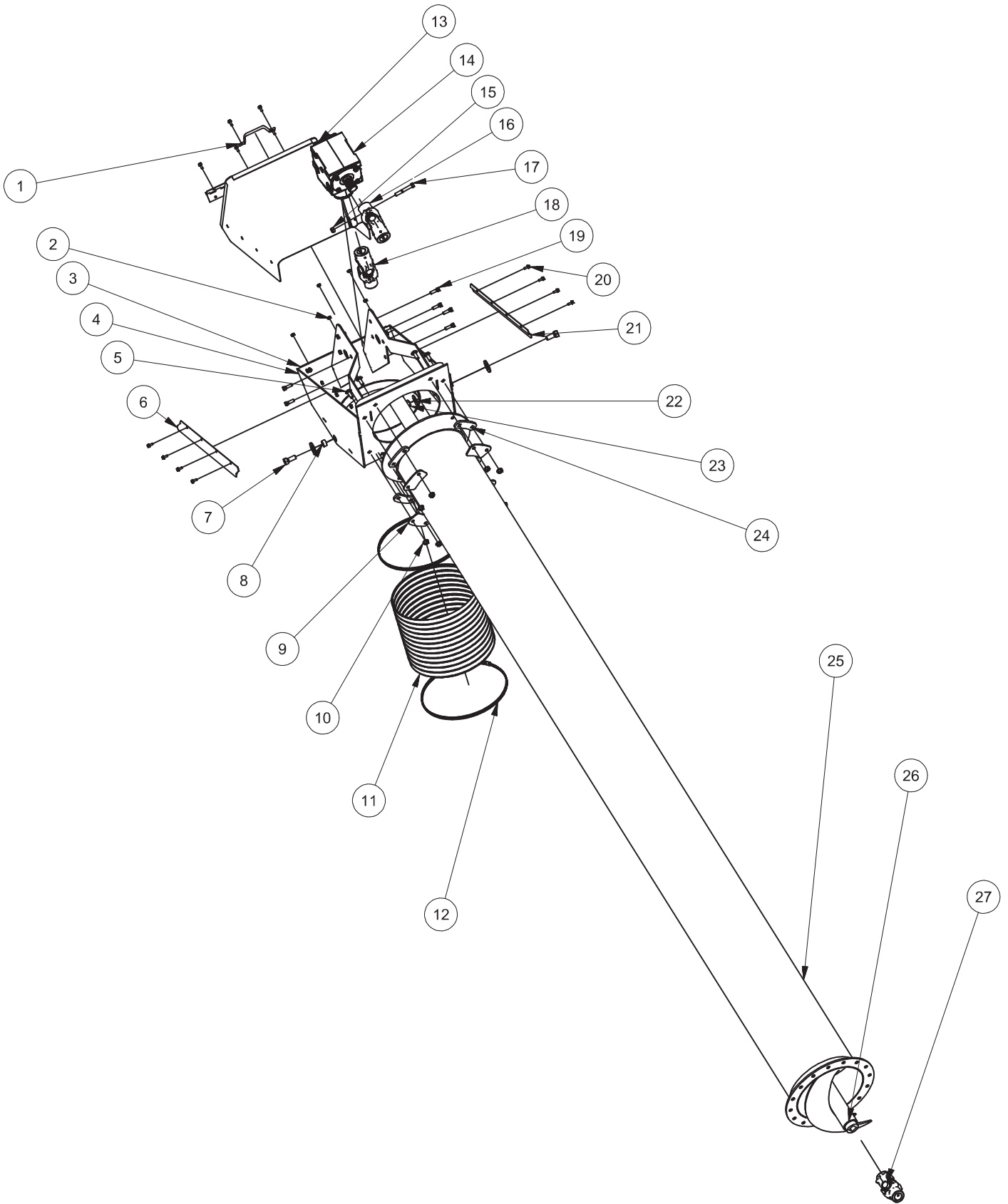


# HOPPER ASSEMBLY

ITEM	PART NUMBER	QTY	DESCRIPTION
1	1300003974-00	1	Throat
2	13-0729-00010	2	5/8 Std NC Nylock Nut
3	1300003982-00	1	LH Flight Extension
4	13-0732-00006	4	Wing Nut
5	13074000808	4	Woodruff Key, 1/4" x 1"
6	1300003971-00	1	Drive Shaft Bushing
7	1300003970-00	1	Hopper
8	13-0702-05012	4	5/16-18 UNC - 0.75
9	13073100005	21	5/16-18 UNC Flange Nut
10	3239-00	4	Wheel c/w Tire
11	13-0712-06016	4	3/8-16 UNC x 1 Flange Bolt
12	1300003972-00	2	Flight Shaft Bushing
13	13-0735-00012	4	Plain Washer (Inch )Type A and B
14	1300003979-00	1	Flight LH
15	13-0709-05012	21	5/16-18 UNC - 0.75 Carriage Bolt
16	3425-00	2	Sealing Plate
17	1300003980-00	2	Chain Tension Holder Plate
18	13-0709-06024	2	3/8-16 UNC - 1.5 Carriage Bolt
19	1300003981-00	2	Chain Tension Plate
20	3053-00	1	LH Flight Bearing
21	13-0729-00006	5	3/8 Std NC Nylock Nut
22	3058-00	1	Door Closure Washer
23	3057-00	1	Door Closure Spring
24	13-0702-06024	1	3/8-16 UNC - 1.5
25	3261	2	Pivot Spacer
26	13-0729-00012	4	3/4 Std NC Nylock Nut
27	13-0709-06012	4	3/8-16 UNC - 0.75 Carriage Bolt
28	3061-00	4	Wheel Spacer
29	13-0712-06012	2	3/8-16 UNC x 0.75 Flange Bolt
30	1239-00	6	Bearing Flangette
31	3398-00	1	Reverse Sprocket
32	3397-00	2	Drive Sprocket
33	3241-00	1	Chain
34	3056-00	1	Inspection Door Closure
35	13-0702-10028	2	5/8-11 UNC - 1.75
36	13-0735-00010	2	Plain Washer (Inch )Type A and B
37	13-0702-08020	4	1/2-13 UNC - 1.25
38	3059-00	4	Pivot Stop
39	3029-00	1	Handle
40	13073100004	8	1/4-20 UNC Flange Nut
41	1300003993-00	1	RH Flight Extension
42	13073100006	18	3/8-16 UNC Flange Nut
43	3048-00	2	Long Rubber Bracket
44	1300003977-00	1	Drive Shaft
45	1300003973-00	1	Guard Mount
46	3232-00	1	Rubber
46	3049-00	2	Short Rubber Bracket
47	1300003978-00	1	Flight RH
49	3396-00	1	Dual Drive Sprocket
50	1300003991-00	1	Drive Guard
51	13073100008	4	1/2-13 UNC Flange Nut
52	13-0712-04012	8	1/4-20 UNC x 0.75 Flange Bolt
53	3228-00	1	Inspection Door Hinge
54	1300003985-00	1	Inspection Door
55	13-0702-06040	2	3/8-16 UNC - 2.5
56	13-0702-12144	4	3/4-10 UNC - 9
57	1300003976-00	1	Flight Guard
58	13-0709-06016	6	3/8-16 UNC - 1 Flange Bolt
59	2316-00	3	Flight Bearing
60	3240-00	1	Chain



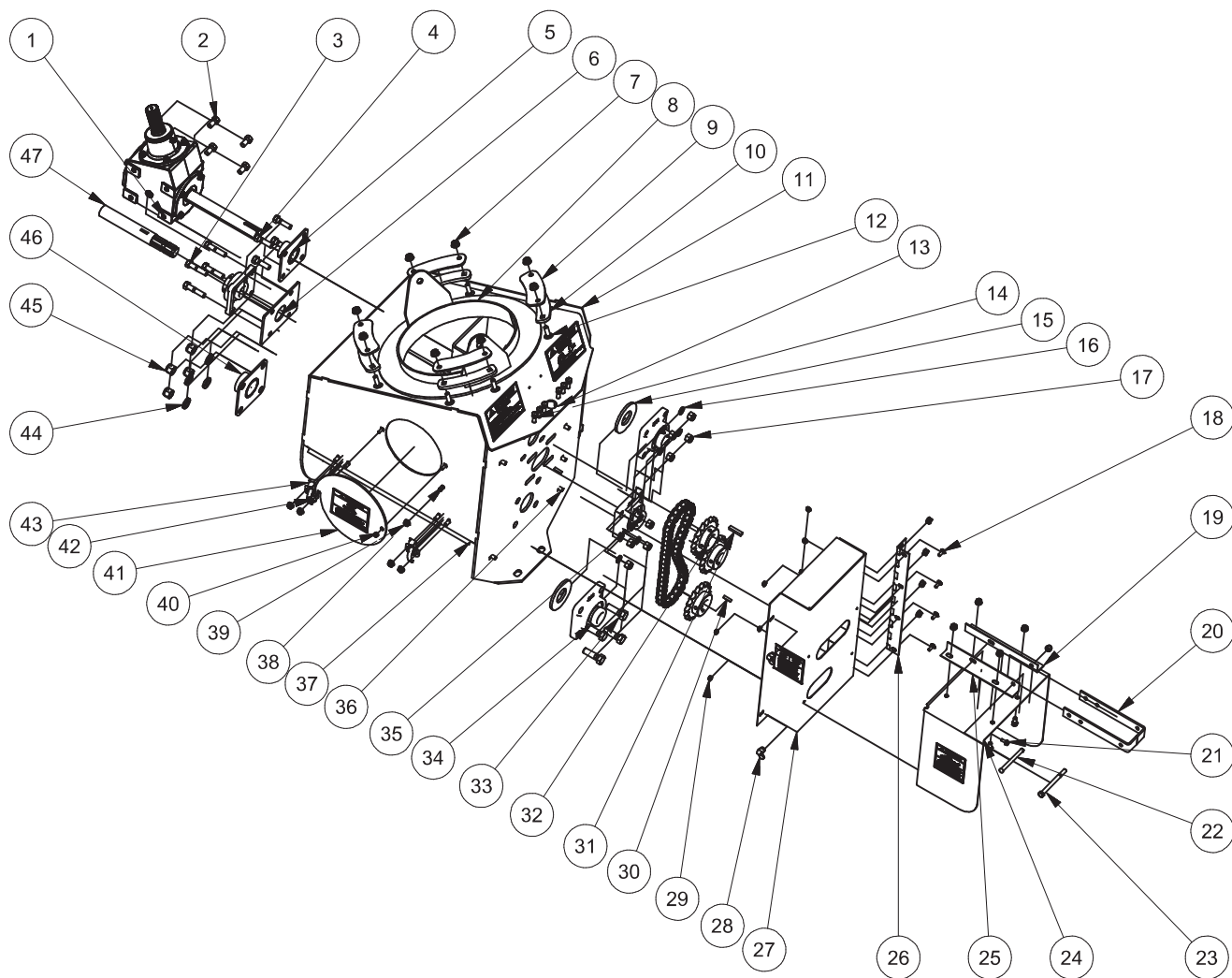
# FEED TUBE ASSEMBLY



# FEED TUBE ASSEMBLY

ITEM	PART NUMBER	QTY	DESCRIPTION
1	3029-00	1	Handle
2	13073100004	16	1/4-20 UNC Flange Nut
3	3222-00	1	Head Cover Hinge
4	13000003968-00	1	Head
5	13-0709-07020	8	7/16-14 UNC - 1.25 Carriage Bolt
6	13000003990-00	1	RH Rain Guard
7	13-0702-10024	2	5/8-11 UNC - 1.5
8	3034-00	2	Pivot Bushing
9	3217-00	4	Plate Top Pivot
10	13-0731-00007	8	Whiz-Lock Nut 7/16" - 14
11	3218-00	1	Rubber Tubing
12	3329-00	2	Rubber Tubing Clamp
13	13000003967-00	1	Head Cover
14	3215-00	1	Top Gear Box
15	13-0729-00007	1	7/16 Std NC Nylock Nut
16	3223-00	1	12R Universal
17	13-0702-07048	1	7/16-14 UNC - 3
18	3224-00	1	12R Universal Joint
19	13-0702-06020	8	3/8-16 UNC - 1.25
20	13-0712-04010	16	1/4-20 UNC x 0.625 Flange Bolt
21	13000003989-00	1	LH Rain Guard
22	13-0735-00010	2	Plain Washer (Inch )Type A and B
23	13-0729-00010	2	5/8 Std NC Nylock Nut
24	3216-00	4	Plate Pivot Spacer
25	4090-00	1	Tube Feed
26	4091-00	1	Flight Feed
27	3128-00	1	12P Universal
28	3035-00	1	Stub

# BOOT

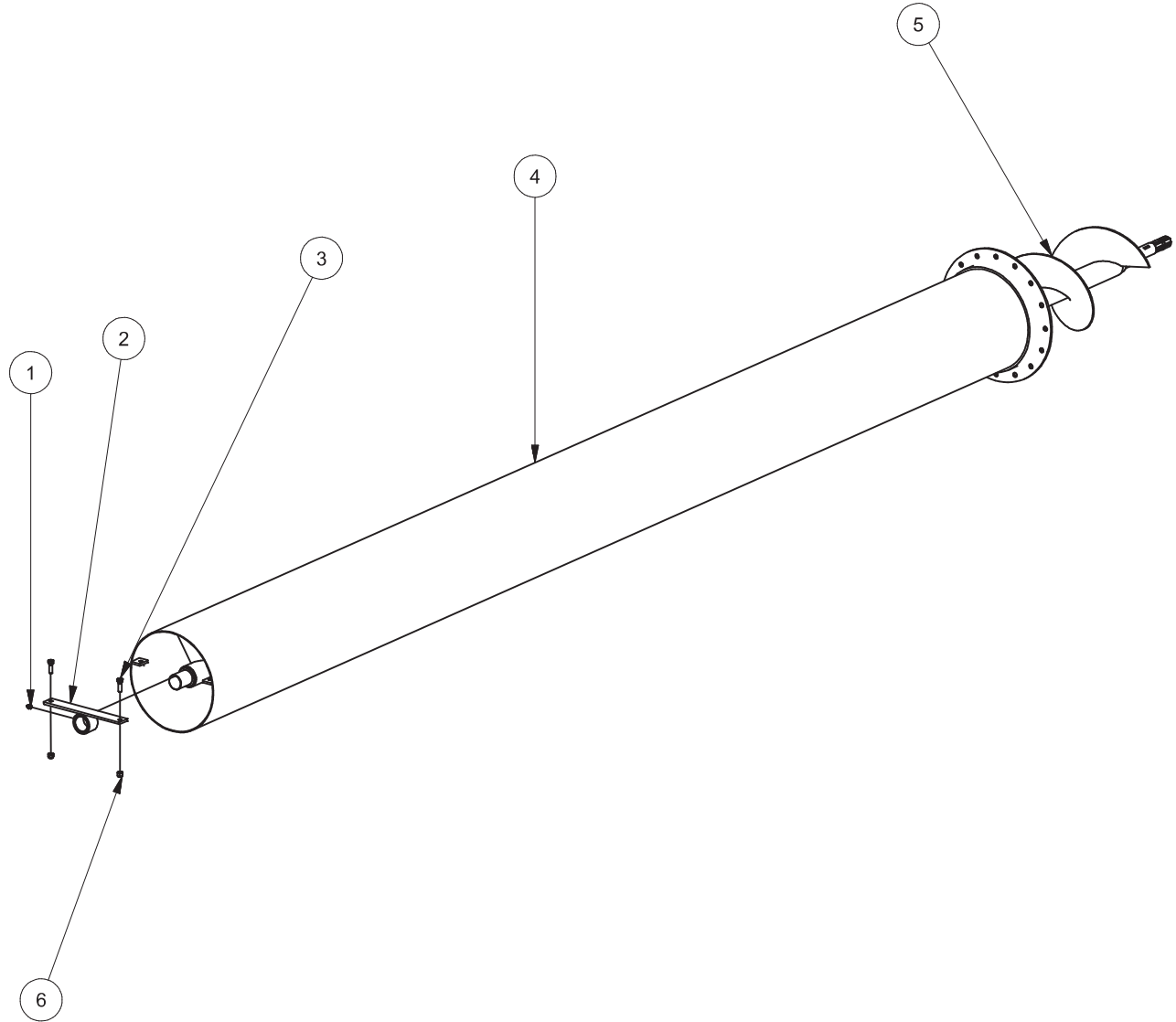


# BOOT

ITEM	PART NUMBER	QTY	DESCRIPTION
1	3262-00	1	Gear Box
2	13-0702-08016	4	1/2-13 UNC - 1
3	13-0702-08036	4	1/2-13 UNC - 2.25
4	13-0702-08028	4	1/2-13 UNC - 1.75
5	3202-00	1	Boot- Gear Box Bushing
6	2714-00	1	Reverse Bearing Shield
7	13073100007	8	7/16-14 UNC Flange Nut
8	13000003964-00	1	Pivot Ring
9	3246-00	4	Plate Pivot Top
10	3247-00	4	Plate Pivot Spacer
11	13000003963-00	1	Boot
12	13-0709-07020	8	7/16-14 UNC - 1.25
13	13-0729-00006	7	3/8 Std NC Nylock Nut
14	13-0702-06020	6	3/8-16 UNC - 1.25
15	2877-00	2	Washer Felt
16	13-0734-00008	8	1/2 Lock Washer-Plated
17	13-0729-00008	8	1/2 Std NC Nylock Nut
18	13-0709-04012	6	Round Head Short Square Neck Bolt
19	13000003988-00	1	Right - PTO Bracket
20	13000003966-00	1	PTO Holder
21	13-0712-04010	4	1/4-20 UNC x 0.625 Flange Bolt
22	2620-00	1	P.T.O. Bracket Pin & Clip
23	13-0702-06072	1	3/8-16 UNC - 4.5
24	13000003992-00	1	PTO - Guard
25	13000003987-00	1	Left - PTO Bracket
26	3263-00	1	Drive Guard Hinge
27	13000003965-00	1	Drive Guard
28	13-0732-00006	2	Wing Nut
29	13073100004	8	1/4-20 UNC Flange Nut
30	13074000808	2	Woodruff Key, 1/4" x 1"
31	3284-00	1	Square Key
32	3211-00	1	Drive Chain c/w Connector Link
33	13-0702-10032	4	5/8-11 UNC - 2
34	3209-00	1	Reverse Bearing
35	2827-00	3	Reverse Bearing
36	13-0709-06012	10	3/8-16 UNC - 0.75
37	13000003975-00	1	Clean Out Door
38	13-0702-06012	5	3/8-16 UNC - 0.75
39	13-0731-00006	13	3/8-16 UNC Flange Nut
40	13-0729-00004	1	1/4 Std NC Nylock Nut
41	13000003984-00	1	Inspection Door
42	13-0732-00004	1	Wing Nut
43	2708-00	2	Clean Out Door Latch
44	13-0734-00012	4	3/4 Lock Washer-Plated
45	13-0729-00010	4	5/8 Std NC Nylock Nut
46	3203-00	1	Flight Bushing - Housing Ass'y
47	2711-00	1	Reverse Shaft



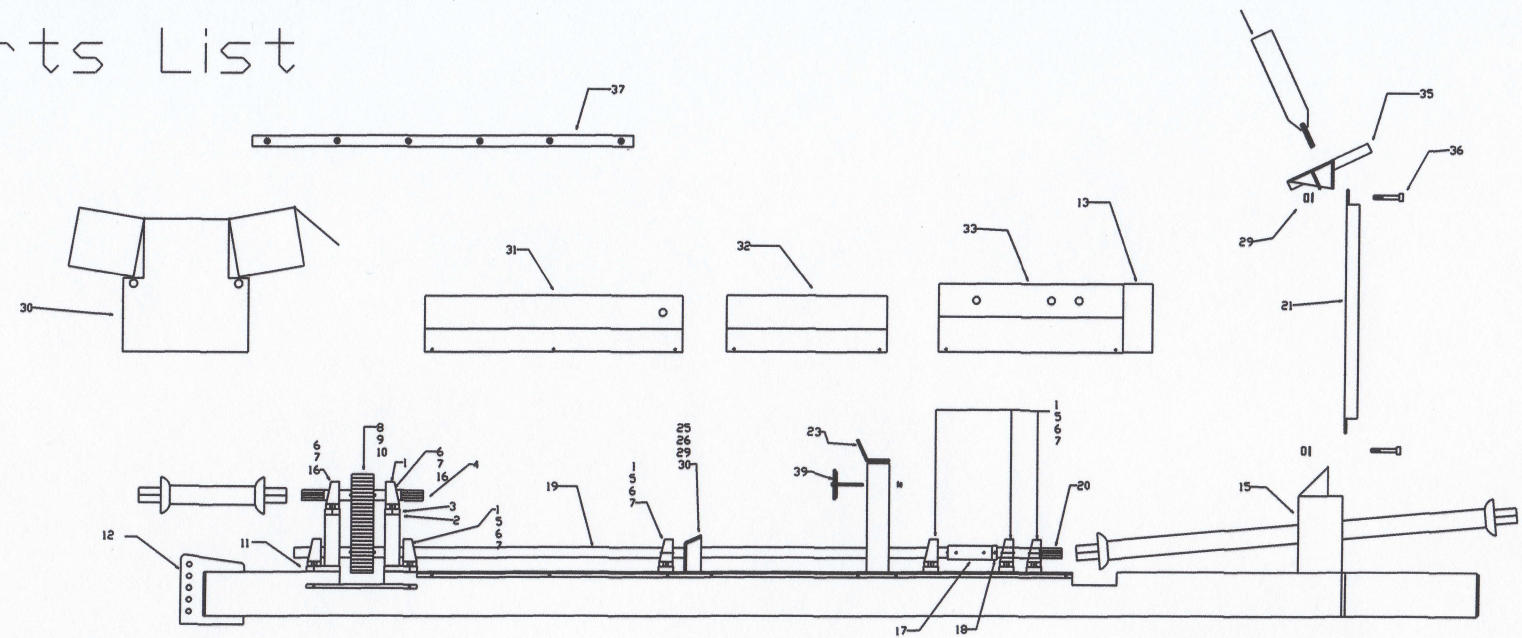
# TUBE ASSEMBLY



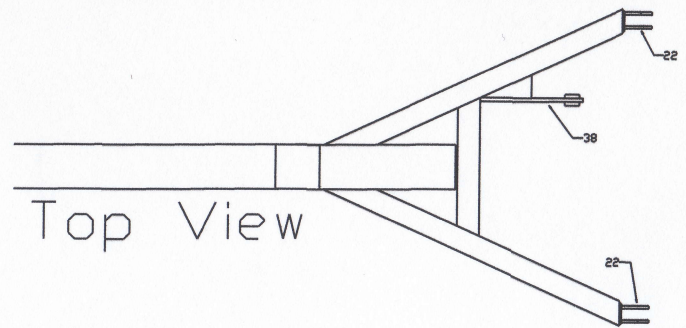
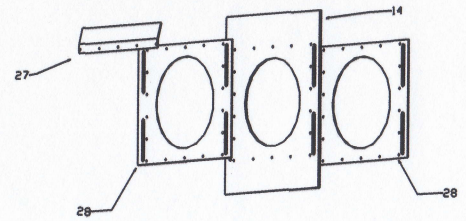
ITEM	PART NUMBER	QTY	DESCRIPTION
1	13-0741-00610	1	Grease Fitting, 1/8" NPT, Straight
2	4089-00	1	Support Head
3	13-0702-06020	2	3/8-16 UNC - 1.25
4	4088-00	1	Tube Main
5	4086-00	1	Flight Main
6	13-0729-00006	2	3/8 Std NC Nylock Nut

4093-08

# Parts List



## Rubber Hopper Ass.



# PARTS LIST

Ref. No.	Part No.	Part Description	No. Req'd	Ref. No.	Part No.	Part Description	No. Req'd
1	H0031	Pillow Block Bearing 1-3/8"	9	21	B1003	Auger Support Arm	
2	S0078	Pillow Block Mounting Plate (sm)	7	22	T0052	Tongue Bracket Rear	4
3	S0208	Belt Tension Spacer	2	23	B1004	Lower Auger Support Bracket	1
4	S0069	Shaft, Dual Spline & Key 16.5" OAL	1	24	F0004	1/2"-13 Hex Nut	4
5	F0007	1/2-20 x 1-3/4" Hex Head Bolt	14	25	F0001	1/2" Flat Washer	12
6	F0023	7/16" Flat Washer	18	26	F0002	1/2" Lock Washer	8
7	F0002	1/2" Lock Washer	18	27	B1005	Rubber Tank Ass. Top Plate	1
8	H0205	Belt (poly chain family) Gates	1	28	B1006	Tank Ass. Plate (front and back)	1 ea
9	H0206	1-3/8" Bushing for Belt Sprocket - Gates	1	29	B1007	1/2" Nut and Washer	
10	H0207	1-3/8" Sprocket - Gates	1	30	B1008	Front Belt Drive Cover	1
11	S0225	Pillow Block Mounting Plate (large)	2	31	B1009	Front Shaft Drive Cover	1
12	T0051	Tongue Bracket Front	1	32	B1010	Middle Shaft Drive Cover	1
13	B1001	Rubber Guard 4"X20-1/2"	1	33	B1011	Rear Shaft Drive Cover	1
14	B1002	Rubber Tank Seal	1	34	B1012	Auger Band	1
15	S0223	Wing Brackets for Auger	2	35	B1013	Auger Cradle	
16	F0228	1/2-20X3" Hex Head Bolts	4	36	B1014	1/2"X1-1/2" Bolt	
17	H0034	Shaft Coupler Keyed 1-3/8"	1	37	B1015	Hopper Support Tube	1
18	H0035	Shalt Collar 1-3/8"	1	38	B1016	Hyd. Lift Arm	1
19	S0204	1-3/8" Shaft	1	39	B1017	Lower Support Tube Access Cover	1
20	S0068	1-3/8" Shaft 12"OAL	1	40	B1018		

## Lift Arm Parts list

1	B1019	Pulley 3.5" 1550#	1	9	B1027	Bolt	1
2	B1020	Pulley 3" 880#	1	10	B1028	Lift Arm Support Mount	1
3	B1021	D Ring Anchor	1				
4	B1022	D Ring Bracket	1				
5	B1023	Lift Arm Main Frame	1				
6	B1024	Lift Arm Support Bracket	1				
7	B1025	Wench Mount Bracket	1				
8	B1026	Unloading Auger Support Bracket	1				