

RhinoAg: **Class A** Implements

▶ **FLEX-WINGS**



RHINO FLEX-WING NEW FEATURES



THE RHINO[®] FLEX-WING HAS BEEN
UNLEASHED

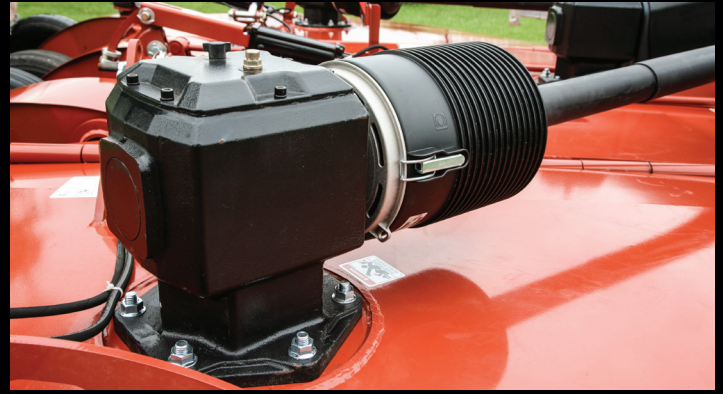
OUR FLEX-WING CUTTERS
ARE DESIGNED FOR
PERFORMANCE,
RELIABILITY,
AND VALUE.



1

UNIQUE BLADE PAN CARRIER

Strong and durable stump jumper.



2

NEW GEARBOX DESIGN

More torque with the same horsepower.



3

PIVOT HITCH

Unique locking clevis device for easy hook-up.



4

SMOOTH DOME DECK

Less clutter, easy to clean with larger cutting chamber. Three sleeker, durable deck styles available: Apex, Epic, and Icon.



5

INDEPENDENT SUSPENSION

Simple, no moving parts.



6

AR400 SKID PLATES & SHOES

Full length, replaceable skid and massive skid shoes made of military grade steel for ultimate durability.

Only offered on the 4155 and 4105 models

RhinoTrax

- ▶ *Best overall performance*
- ▶ *All-new material*
- ▶ *Increased traction*
- ▶ *Flat-less operation*
- ▶ *One-piece 10mm rim for max strength*



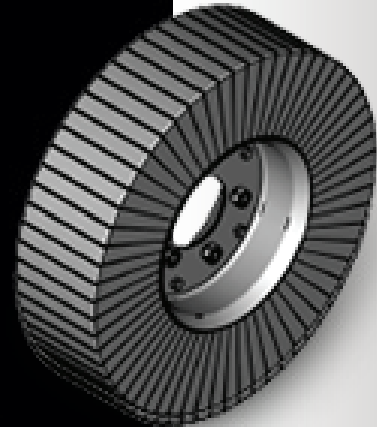
Foam Filled

- ▶ *Long lifespan*
- ▶ *Flat-less operation*
- ▶ *Better long-distance option*



Laminated

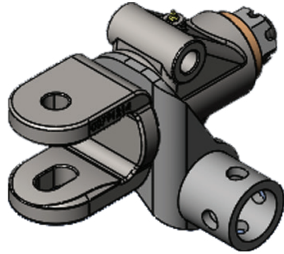
- ▶ *Cost-effective option*
- ▶ *Good, short-distance option*
- ▶ *Better for flat terrain applications*



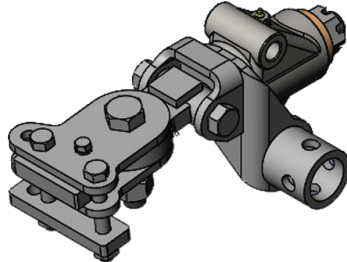
TIRE OPTIONS

HITCH GUIDE

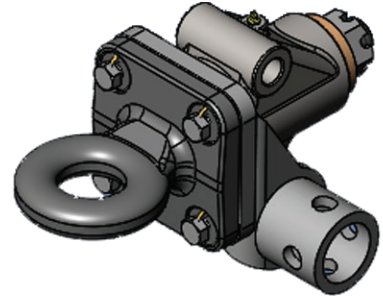
Standard



Precision



Pintle



RHINO FLEX-WING

APPLICATION GUIDE

<i>Applications</i>	3150	4150	4155	5150
Clearing brush up to 4" in diameter		✓	✓	
Clearing brush up to 5" in diameter				✓
Commercial mowing		✓	✓	✓
Farm use	✓	✓	✓	
General mowing	✓	✓	✓	
Heavy-duty agricultural use		✓	✓	✓
Industrial mowing		✓	✓	✓
Pasture maintenance	✓	✓	✓	
Right-of-way mowing		✓	✓	✓
Roadside mowing	✓	✓	✓	
Shredding crops		✓	✓	
Shredding stalks	✓	✓	✓	

Specifications		3150	4150	4155	5150
Comparable 10' Offset Model		3100	-	4105	5100
Cutting Width		15'			
Transport Width*		96"			
Transport Height*		80"			
Overall Width*		187"			
Overall Length*		183"			
Cutting Height*		2"-14"			
Self-Leveling Height Adjustment		Hydraulic Cylinder			
Jack Stand		Standard			
Hitch		Pull			
Blade Carrier		Infinity - Cast			
Blades		1/2" x 4" Parallel Lift			1/2" x 5" Parallel Lift
Blade Overlap		6"			
PTO Horsepower Required		50 HP	60 HP		70 HP
Gearbox Rating**	Divider	160 HP	250 HP		
	Center & Wing	130 HP	225 HP		
Output Shaft Diameter		2"	3"		
Blade Tip Speed	Center 540 RPM	14,861 FPM	16,286 FPM	16,286 FPM	13,436 FPM
	Center 1000 RPM	15,570 FPM	16,380 FPM	16,380 FPM	13,704 FPM
	Wing 540 RPM	14,861 FPM	16,422 FPM	16,422 FPM	13,169 FPM
	Wing 1000 RPM	15,776 FPM	15,983 FPM	15,983 FPM	13,367 FPM
Cutting Capacity (Diameter)		3"	4"	4 1/2"	5"
Driveline Size	Main	CAT 5 CV TR	CAT 6 CV	CAT 6 CV	CAT 6 CV
	Wing	CAT 4	CAT 4	CAT 5	CAT 6
Driveline Protection		Slip Clutch			
Deck Thickness		10 Ga	7 Ga	7 Ga	1/4"
Side Skirt		1/4"		1/4" AR400 <i>Military Grade Steel</i>	1/4"
Tires & Wheels		See Tire Section			
Wing Lift Hydraulics		Standard			
Wing Flex (Degrees)		90° Up/25° Down			
Operational Wing Flex (Degrees)		90° Up/25° Down			
Safety Tow Chain		Standard			
Safety Deflectors		Rubber Deflectors or Chain Guard	Chain Guard		
Weight (Approx)		5,190 lbs	5,395 lbs	5,455 lbs	5,635 lbs
Tongue Weight		1,610 lbs	1,840 lbs	1,870 lbs	1,970 lbs

*Dependent on tire size

1020 S. Sangamon Ave. • Gibson City, IL 60936

TEL: 800-221-2855

www.RHINOAG.com

RHINOAG
FW-1121-DYNA